

CERTIFICATE OF LOCATION OF GOVERNMENT CORNER

NORTHWEST Corner of Section 17, Township 106N, Range 43W, 5TH P.M.

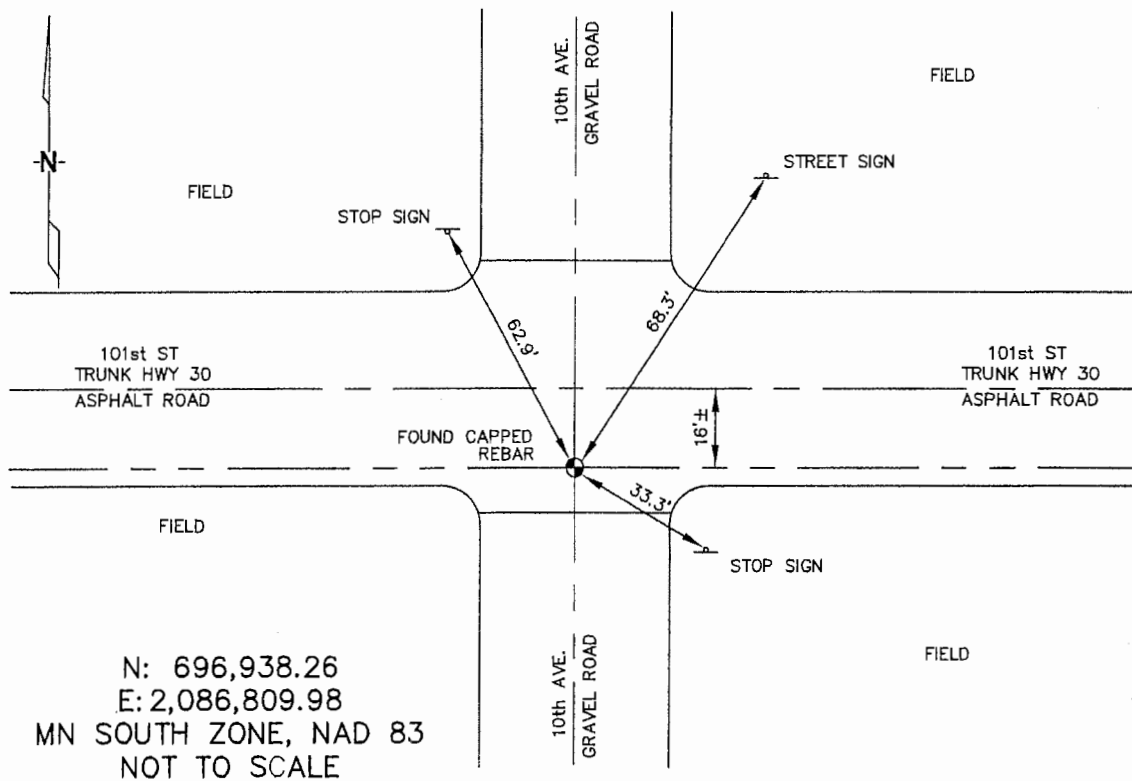
STATE OF MINNESOTA, County of MURRAY

At the corner location shown on the sketch :

On 3/22/2006 found A REBAR WITH AN UNREADABLE CAP, IN THE
C/L OF 10th AVE & 16'± SOUTH FROM THE C/L OF T.H. 30.
 left monument as found, lowered monument, removed monument (explain)

On _____ set _____

Sketch of reference ties



Statement of evidence relative to this corner location is on back page

I hereby certify that this document and the data contained herein was prepared by me or under my direct supervision.

Thomas J. Zeff 5/22/06
 Thomas J. Zeff Date

Registration No. 44563

- Land Surveyor, Professional Engineer
 County Surveyor, County Engineer

OFFICE OF THE COUNTY RECORDER

County of _____

SEP 28 2006

I hereby certify that this document was filed in the Co. Recorders office at _____ .M. on the day of _____ A.D., 20

County Recorder James V. Johnson
 By _____, Deputy

DOCUMENT NO. _____

STATEMENT OF EVIDENCE:

NORTHWEST CORNER, SECTION 17, T. 106 N., R. 43 W.,
MURRAY COUNTY, MINNESOTA

- 1866 J.W. Bishop, US. Deputy Surveyor, monumented corner.
- 10/26/1902 Murray Co. placed a stake, mound and dug puts, placed a small line stones & a bottom stone on corner. no ties.
- ? Date MN DOT R/W Map for Trunk Highway 30 calls for the corner being at the intersection of old Trunk Highway # 47 (east and west) and road (north & south and being 17.0' south from Trunk Highway 30 C/L POT Sta 693+66.4.
- 3/22/2006 Ulteig Engineers, Inc., Survey Crew, Dennis Lavallie Party Chief, found a rebar with an unreadable cap, in the C/L of 10th Street, 16'± south from the C/L of Trunk Highway 30.
Ties: NE-68.3' to steel post of Street Sign;
SE-33.3' to steel post of Stop Sign;
NW-62.9' to steel post of Stop Sign.